



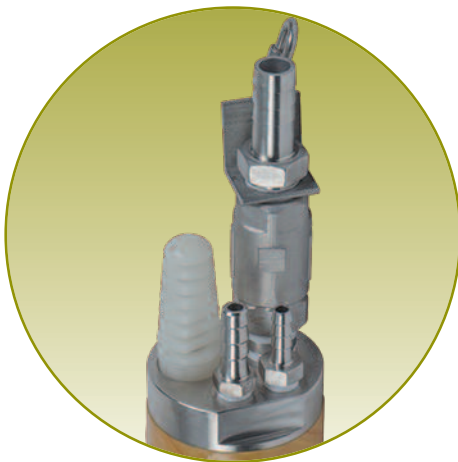
GEOTECH

AR4 4" Auto-Reclaimer

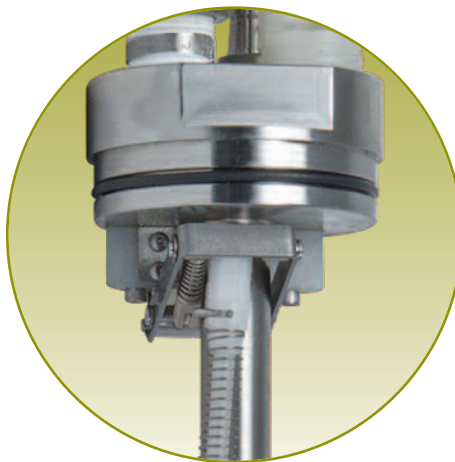
The AR4 is designed to pump floating hydrocarbons, leachate, and condensate in total fluids applications. The AR4 is operated automatically, and needs no controller. Everything needed to operate the system is built into the pump. The design withstands the harshest and most corrosive environments such as landfills or mines.

FEATURES

- Intrinsically safe design and approved for hazardous environments
- Fits 4" or larger diameter wells
- Ability to pump from 250' below ground
- Can pump particles up to 1/8" diameter
- Consistently pumps fluids as light as 0.70 SpG reliably
- New adjustment-free valve mechanism – no magnets
- Improved float design for maximum buoyancy and chemical compatibility
- Optimal working pressures as low as 1 psi above head pressure
- Standard light-weight composite housing, corrosive resistant 316 stainless steel and PVDF parts for less maintenance
- Fast and simple disassembly for easy maintenance



Pump Head



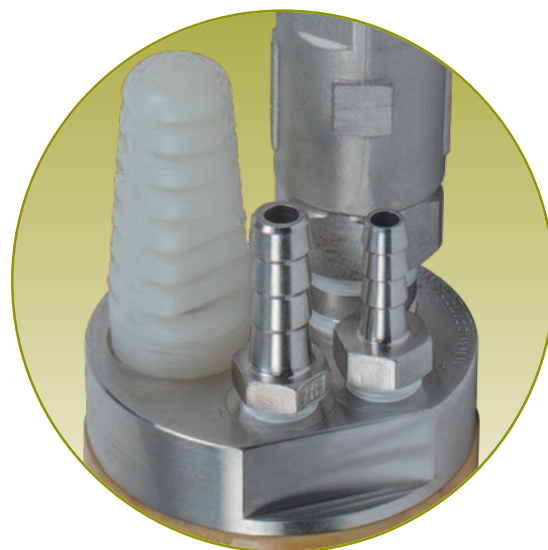
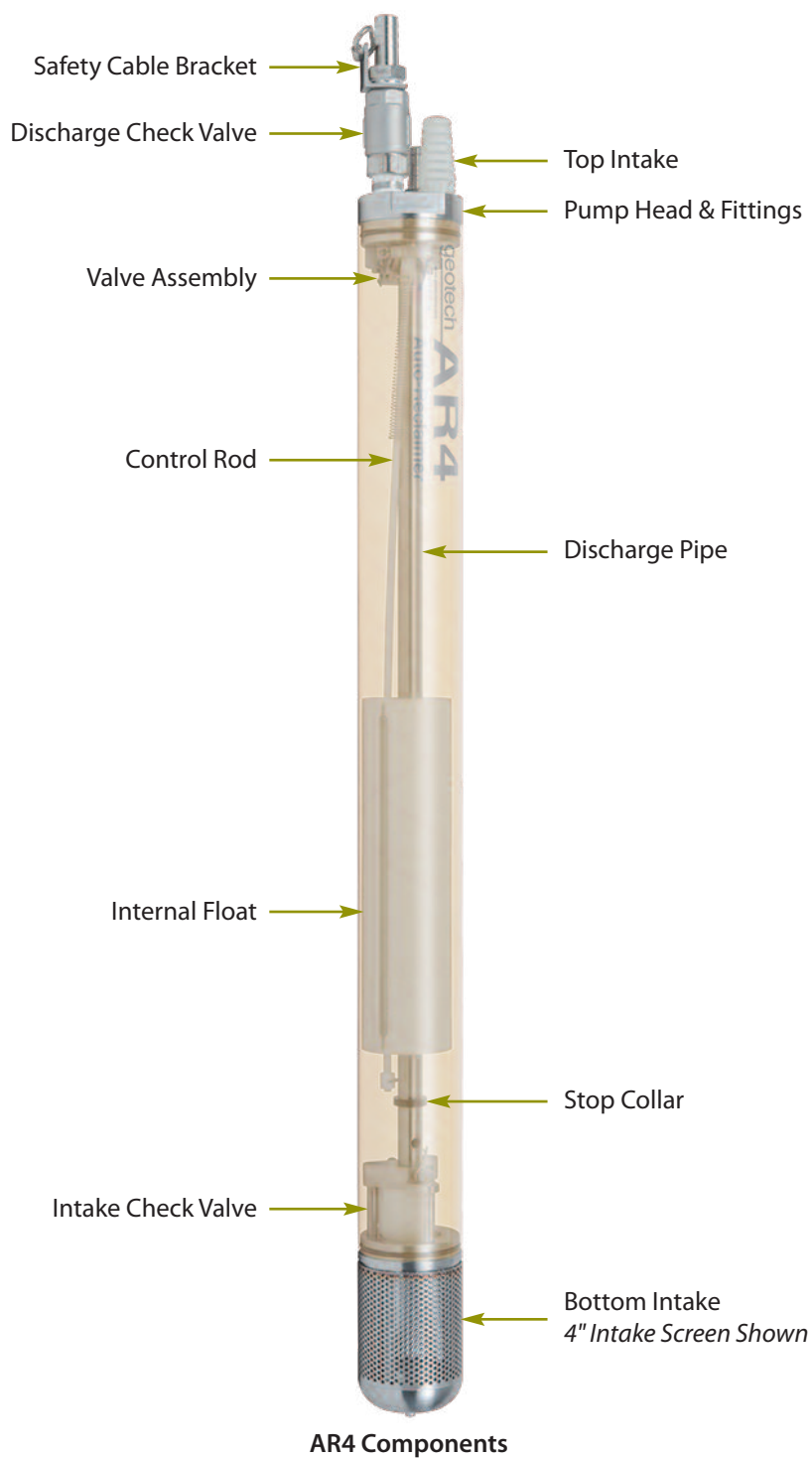
Pump Valve



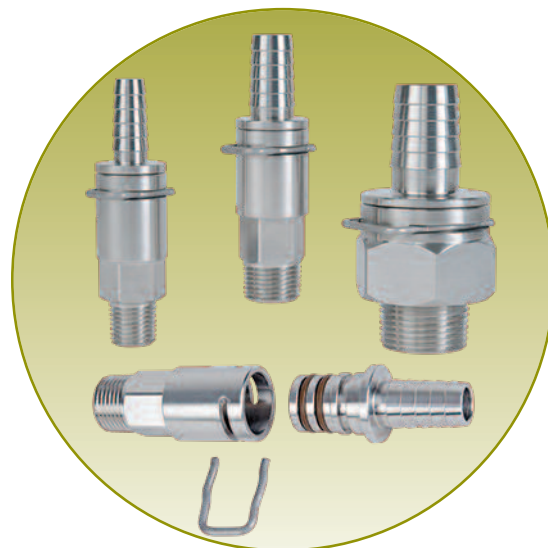
Composite Housing



Stainless Steel Housing



Top Intake



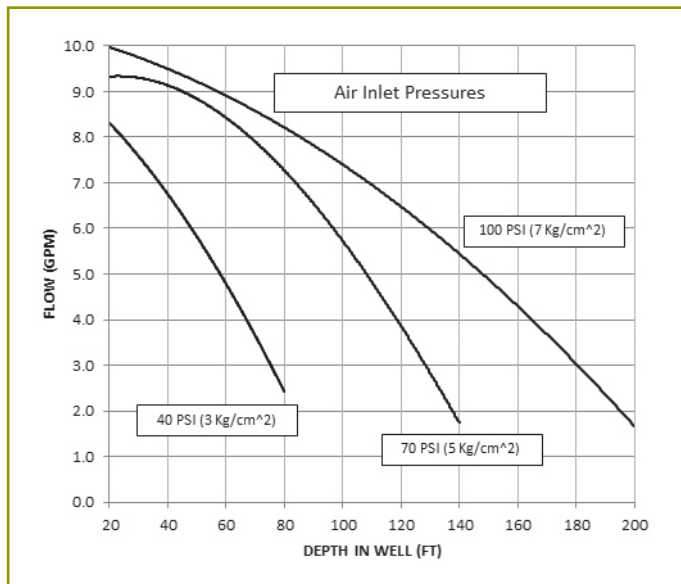
Optional Quick-Connect Fittings

SPECIFICATIONS

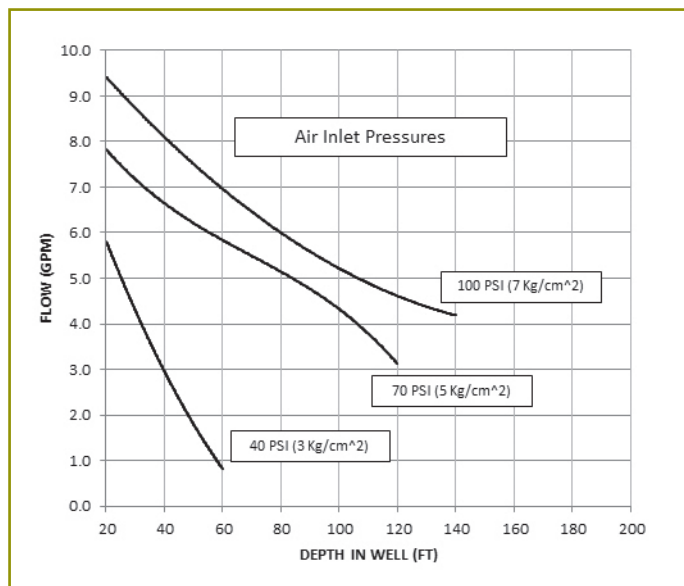
	SHORT	LONG	EXT
Outside Diameter:	3.5" (8.9 cm)		
Lengths Up To:	48" (122 cm)	60" (152 cm)	72" (183 cm)
Weight:	13.5 lbs. (6 kg)	15.6 lbs. (7 kg)	17.7 lbs. (8 kg)
Min. Activation Level:	35" (89 cm)	47" (119 cm)	59" (150 cm)
Operating Pressure Range:	10-120 psi (0.7-8.5 kg/cm ²)		
Max. Operating Temp:	220°F (104°C)		
Fluid Volume/Cycle*:	.7 gal. (2.6 liter)	1.0 gal. (3.8 liter)	1.5 gal. (5.6 liter)
Max. Flow Rate**:	8.5 gpm (32 lpm)		
Standard Fittings:	SS Barb		
Fluid Discharge	¾" x ¾" MPT		
Air Supply	¾" x ¾" MPT		
Air Exhaust	½" x ¾" MPT		
Materials of Construction:	Includes: SS316, FRP, FPM, PVDF, HDPE, PTFE, Viton®		

*Specific gravity and viscosities will alter specifications

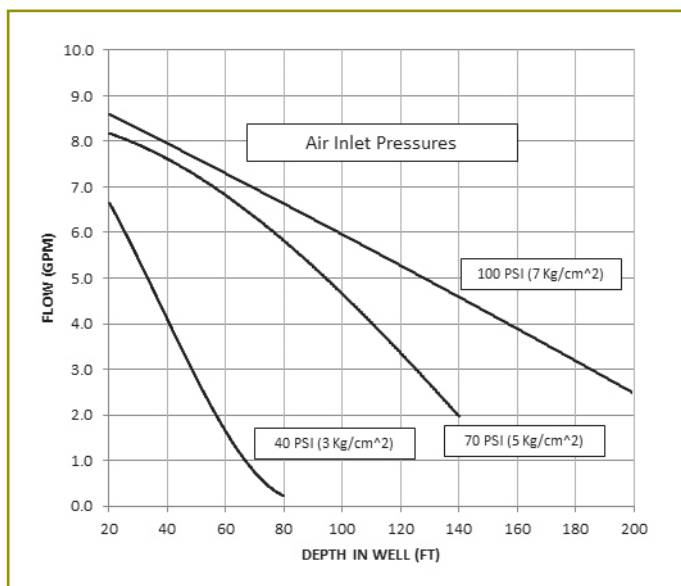
**Flow rates will vary with site conditions



AR4 Short, Bottom Inlet
10' (3m) Submergence, ¾" (19mm) ID Hose



AR4 Long, Bottom Inlet
10' (3m) Submergence, ¾" (19mm) ID Hose



AR4 Extended, Bottom Inlet
10' (3m) Submergence, ¾" (19mm) ID Hose

PNEUMATIC CYCLE COUNTER

The Pneumatic Cycle Counter is mounted inline after the filter and allows you to total the volumes pumped and determine service and maintenance schedules.

Specifications:

Model	GEOPC350
Material	464 Naval Brass
Size	5" L x 2" W
Thread Type	¼" FPT
Pressure Range	40-275 psi
No. of Counts Before Rollover	999,999
Air Supply Tubing Sizes:	¾" ID ½" ID
Minimum Distance To Pump	15' 15'
Maximum Distance From Pump	350' 300'



TUBING

Nylon 12:

Air Supply ¾" ID x ½" OD

Exhaust ½" ID x ⅝" OD

Discharge ¾" ID x 1" OD

Min. Bend Radius 24"

Max. Pressure 330 psig @ 70°F

Max. Continuous Length 500'

Poly:

Air Supply ¾" ID x ½" OD

Exhaust ½" ID x ⅝" OD

Discharge ¾" ID x 1" OD

Min. Bend Radius 24"

Max. Pressure 120 psig @ 70°F

Max. Continuous Length 300'



COMPRESSORS & REGULATORS

Geotech can provide the compressed air equipment required for your Auto-Reclaimers.

Air Compressors

Geotech offers electric powered and gas powered compressors, selected for dependability, low maintenance and oil-free high performance.

Air Regulators

A variety of types for your air supply line requirements.



WELL CAPS AND ACCESSORIES

A Standard Slip

Penetrations, with safety cable hanger
Available for 2, 3, 4, 6, and 8 inch diameter wells

B Compression Slip

Compression fittings, with safety cable hanger
Available for 2, 3, 4, 6, and 8 inch diameter wells

C Vacuum Caps

Potted well cap for a complete vacuum seal
Barbed style fittings, with safety cable hanger
Available with quick-connect fittings
Available for 2, 3, 4, 6, and 8 inch diameter wells

Standard Fittings Provided:

Air – ¾" Barb

Exhaust – ½" Barb

Discharge – ¾" Barb

Custom well caps and quick-connect fittings available upon request.

